



CROUD PRESENTS

2022

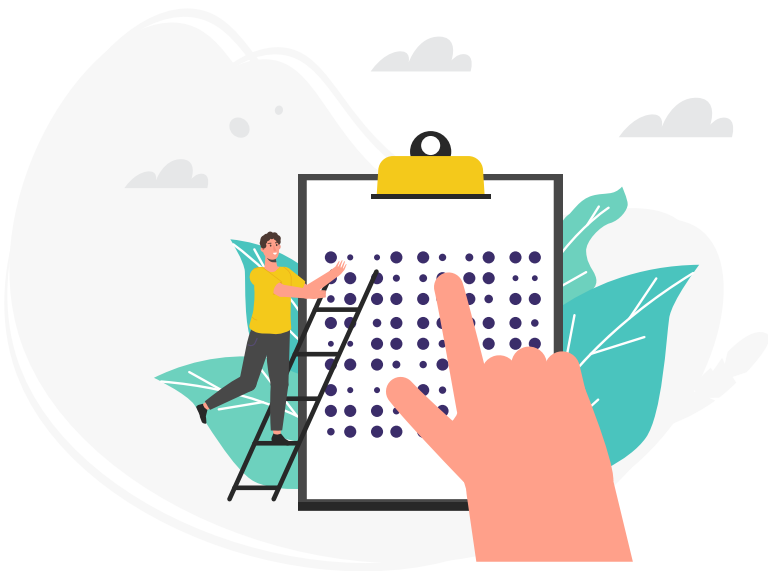
Diversity & inclusion calendar.

croud



Jan / 01

2022



HIGHLIGHTS



World Braille Day, celebrated since 2019, is observed to raise awareness of the importance of Braille as a means of communication in the full realisation of the human rights for blind and partially-sighted people.

S	M	T	W	T	F	S
26	27	28	29	30	31	Braille Literacy Month 1 st - 31 st 1
2	3	World Braille Day 4	5	6	Christmas Day (Orthodox) 7	8
9	10	11	12	13	14	15
World Religion Day 16	15 Shevat (Judaism) Blue Monday International Mentoring Day Martin Luther King Day 17	Mahayana New Year (Buddhist) 18	19	20	National Hug Day 21	22
23	24	25	26	International Holocaust Remembrance Day 27	28	29
30	31	1	2	3	4	5

Feb / 02

2022



HIGHLIGHTS






Lunar New Year



World Cancer Day



International Stand Up to Bullying Day

S	M	T	W	T	F	S
30	Lunar New Year Black History Month  LGBT+ History Month  1 st - 28 th	1	National Girls and Women in Sport Day 2	Seasonal Divide  Time to Talk Day 3	World Cancer Day 4	5
International Day of Zero Tolerance for Female Genital Mutilation 6	7	8	9	10	International Day of Women and Girls in Science 11	12
13	St. Valentine's Day (Christian) 14	Lantern Festival 15	16	Random Acts of Kindness Day Sports Relief 17	International Asperger's Day 18	19
National Love your Pet Day World Day of Social Justice 20	International Mother Language Day Aromatic Spectrum Awareness Week 21 st - 27 th 21	22	23	24	International Stand Up to Bullying Day 25	26
27	Eating Disorder Awareness Week 28 th - 6 th 28	1	2	3	4	5

Mar / 03

2022



HIGHLIGHTS



International Transgender Day of Visibility is honoured every year on March 31st. It is a time to celebrate transgender people around the globe and the courage it takes to live openly and authentically, while also raising awareness around the discrimination trans people still face.

S	M	T	W	T	F	S			
	Shrove Tuesday (Christian) Zero Discrimination Day Disability Day of Mourning International Wheelchair Day Lailat al-Miraj (Islam) Independence Movement Day 🇺🇸 Women's History Month	1	Ash Wednesday - Lent begins (Christian)	2	World Hearing Day	3	4		
6	National Careers Week Endometriosis Awareness Week	7	International Women's Day	8	9	10	World day of Muslim Culture, Peace, Dialogue and Film	12	
13	14	15	Purim (begins sunset of Wednesday, ends nightfall of Thursday; work should be avoided) (Judaism) Young Carers Action Day	16	St Patrick's Day	17	Red Nose Day	18	19
Spring Equinox/Os- tara (Wicca/Pagan) Naw-Rúz (Bahá'í) 20 th - 21 st	20	International Day for the Elimination of Racial Discrimination Single Parents Day World Down Syndrome Day Neurodiversity Celebration Week	21	23	24	International Day of Remembrance of the Victims of Slavery and the Transatlantic Slave Trade	25	World Purple Day (Epilepsy Day)	26
27	World Autism Awareness Week	28	29	World Bipolar Day	30	International Transgender Day of Visibility	31	1	2

Apr / 04

2022



HIGHLIGHTS

 **Stress Awareness Month**

 **World Health Day**

 **Easter Sunday**

S	M	T	W	T	F	S	
27	28	29	30	31	National Autism Awareness Month Stress Awareness Month	World Autism Day Ramadan Begins* (Islam)	
Qingming Festival 3 rd - 5 th	3	4	5	6	World Health Day	Day of Silence	
10	World Parkinson's Day	11	12	13	Vaisakhi (Hindu, Sikh)	Good Friday (Christian) Passover (begins sunset of Friday, ends nightfall of Saturday; no work permitted 15-16 and 22-23. Work permitted on 17- 21 with certain restrictions) (Judaism)	
Easter Sunday (Christian)	Easter Monday (Christian) Birthday of Guru Angad Dev (Sikh)	17	18	19	20	First Day of Ridván (Bahá'í)	Stephen Lawrence Day
World Immunisation Week	24	25	Lesbian Visibility Day	International Guide Dog Day	26	Ninth Day of Ridván (Bahá'í) Shōwa Day (Japan)	St George's Day
					27	Laylat al-Qadr* (Islam)	23
					28	29	30

May / 05

2022



S	M	T	W	T	F	S
International Workers' Day 1	Eid al Fitr (Islam) 2	3	4	Children's Day 5	6	7
Parents' Day 8	Buddha's Birthday 9	Mental Health Awareness Week 10	11	12	13	14
15	Dementia Action Week Learning at Work Week 16	International Day Against Homophobia, Transphobia and Biphobia 17	18	Agender Pride Day Global Accessibility Awareness Day 19	20	World Day for Cultural Diversity for Dialogue and Development 21
22	23	Pansexual and Panromantic Awareness and Visibility Day 24	25	26	27	28
29	30	31	1	2	3	4

HIGHLIGHTS



International Workers' Day



Eid al Fitr



World Day for Cultural Diversity for Dialogue and Development

Jun / 06

2022



HIGHLIGHTS

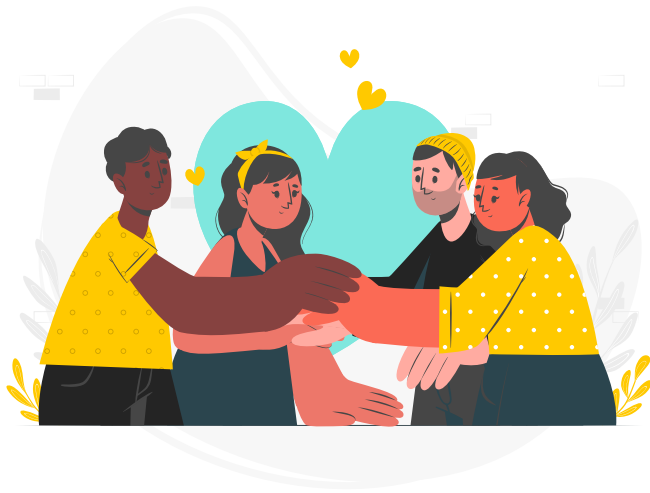


Pride month is an annual observance of lesbian, gay, bisexual and transgender history. Founded in 1994, the LGBTQ+ community celebrates the history of gay rights and related civil rights movements throughout the entire month of June.

S	M	T	W	T	F	S
27	28	Pride Month Gypsy, Roma and Traveller Month Volunteers' Week		1	2	Dragon Boat Festival 3 rd - 5 th
5	Memorial Day	Tourette's Awareness Day Carers Week	8	9	10	11
Pulse Night of Remembrance	13	Learning Disability Week World Blood Donor Day	15	16	17	18
19	World Refugee Day Refugee Week Learning Disability Week	21	Windrush Day	International Women in Engineering Day	24	25
26	27	Stonewall Riots Anniversary	29	30	1	2

Jul / 07

2022



HIGHLIGHTS



**Disability
Pride Month**



**South Asian
Heritage Month**



**World
Friendship Day**

S	M	T	W	T	F	S
24	25	26	27	28	Disability Pride Month Good Care Month 1	2
3	4	5	6	7	8	Eid ul Adha (Islam) 9 th - 14 th 9
10	11	12	13	International Non-Binary Peoples' Day 14	World Youth Skills Day 15	16
World Day for International Justice 17	Nelson Mandela International Day South Asian Heritage Month 18 th Jul - 17 th Aug 18	19	20	21	22	23
24	25	26	27	28	29	World Friendship Day World Day Against Trafficking in Persons 30
31	1	2	3	4	5	6

Aug / 08

2022



HIGHLIGHTS



International Day of the World's Indigenous Peoples



World Humanitarian Day



International Day for the Remembrance of the Slave Trade and its Abolition

S	M	T	W	T	F	S
31	World Breastfeeding Week	1	2	3	Chinese Valentine's Day	6
7	8	International Day of the World's Indigenous Peoples	10	11	International Youth Day	International Left Handers Day Obon (Japanese Buddhist holiday) 13 th - 15 th
14	Independence Day	15	16	17	18	World Humanitarian Day
21	International Day Commemorating the Victims of Acts of Violence Based on Religion or Belief	22	International Day for the Remembrance of the Slave Trade and its Abolition	24	25	26
28	29	Grief Awareness Day	31	1	2	3

Sep / 09

2022



HIGHLIGHTS



International Charity Day is an annual international day of observance declared by the United Nations General Assembly. This day is dedicated to raising awareness and celebrating all of the charitable activities and causes on the local, national, regional and international level.

S	M	T	W	T	F	S
28	29	30	31	World Alzheimer's Month Deaf Awareness Month 1	2	3
4	International Day of Charity 5	6	7	8	Chuseok 9 th - 12 th 	World Suicide Prevention Day Mid-Autumn Festival 10 th - 12 th
11	12	13	14	World Afro Day 15	Bisexual Awareness Week 16	17
International Day of Equal Pay 18	National Eye Health Week International Week of Deaf People 19	20	International Day of Peace World Alzheimer's Day 21	22	Bi Visibility Day International Day of Sign Languages 23	24
Rosh Hashanah (Jewish) 25 th - 27 th 25	European Day of Languages 26	27	28	29	30	1

Oct / 10

2022



HIGHLIGHTS



Black History Month



World Mental Health Day



Diwali

S	M	T	W	T	F	S
25	26	27	28	29	International Day of Older Persons Golden Week 🇮🇳 ADHD Awareness Month Dyslexia Awareness Month Black History Month 🇬🇧 Breast Cancer Awareness Month 🇺🇸 Go Sober for October	1
2	National Foundation Day 🇰🇷	Chongyang Festival 🇨🇳 Yom Kippur (Jewish) 4 th - 5 th	World Teacher's Day	World Cerebral Palsy Day	World Smile Day	International Lesbian Day
Baby Loss Awareness Week	World Mental Health Day Dyspraxia Awareness Week National Work Life Week	National Coming Out Day International Day of the Girl Child	World Arthritis Day	World Sight Day		International Day of Rural Women
09	10	11	12	13	14	15
Invisible Disabilities Week	International Day for the Eradication of Poverty	Anti Slavery Day World Menopause Day	International Pronouns Day National Adoption Day 🇺🇸	Spirit Day		International Stammering Awareness Day
16	17	18	19	20	21	22
23	Diwali Bandi Chhor Divas (Sikh)	25	Intersex Awareness Day	27	28	29
30	31	1	2	3	4	5

Nov / 11

2022



HIGHLIGHTS





World Kindness Day



World Diabetes Day



Transgender Awareness Week

S	M	T	W	T	F	S				
30	All Saints' Day (Christian) Islamophobia Awareness Month Movember	1	All Souls Day (Christian) Stress Awareness Day	2	3	4	5			
Trans Parent Day	6	International Stress Awareness Week	7	Intersex Day of Solidarity Birthday of Guru Nanak Dev (Sikhism)	8	9	10	Armistice - Interfaith	11	12
World Kindness Day Remembrance Sunday Inter Faith week Transgender Awareness Week	13	World Diabetes Day	14	15	16	17	UK Disability History Month 18 th Nov - 18 th Dec 	18	International Men's Day	19
Trans Day of Remembrance	20	Presentation of the Theotokos (Orthodox Christian)	21	22	23	Thanksgiving Day 	24	International Day for Elimination of Violence Towards Women Day of the Covenant (Baha'i)	25	
Advent Sunday (Christian)	27	Ascension of Abdu'l-Bahá (Baha'i) 28 th - 29 th	28	Chanukah (Judaism)	29	Saint Andrew's Day (Christian Bank Holiday - Scotland)	30	1	2	3

Dec / 12

2022



HIGHLIGHTS



Hanukkah



Christmas



Kwanzaa

S	M	T	W	T	F	S
27	28	29	30	World AIDS Day 1	International Day for the Abolition of Slavery National Grief Awareness Week 2	International Day of People With Disabilities 3
4	International Volunteer Day 5	6	7	Pansexual Pride Day 8	9	Human Rights Day 10
11	12	13	14	15	16	17
International Migrants Day Hanukkah (Judaism) 18 th - 26 th 18	19	20	21	22	23	24
Christmas Day 25	Kwanzaa 26 th - 1 st 26	27	28	29	30	31



Get in touch.

Culture and community is everything to us at Croud, and we always aim to put diversity and inclusion at the forefront of how we approach our employees, partners, clients, and friends and family of the business.

If we've missed any key dates, holidays, or celebrations, please get in touch with steerco@croud.com.

croud

